

RT7275GCP

---

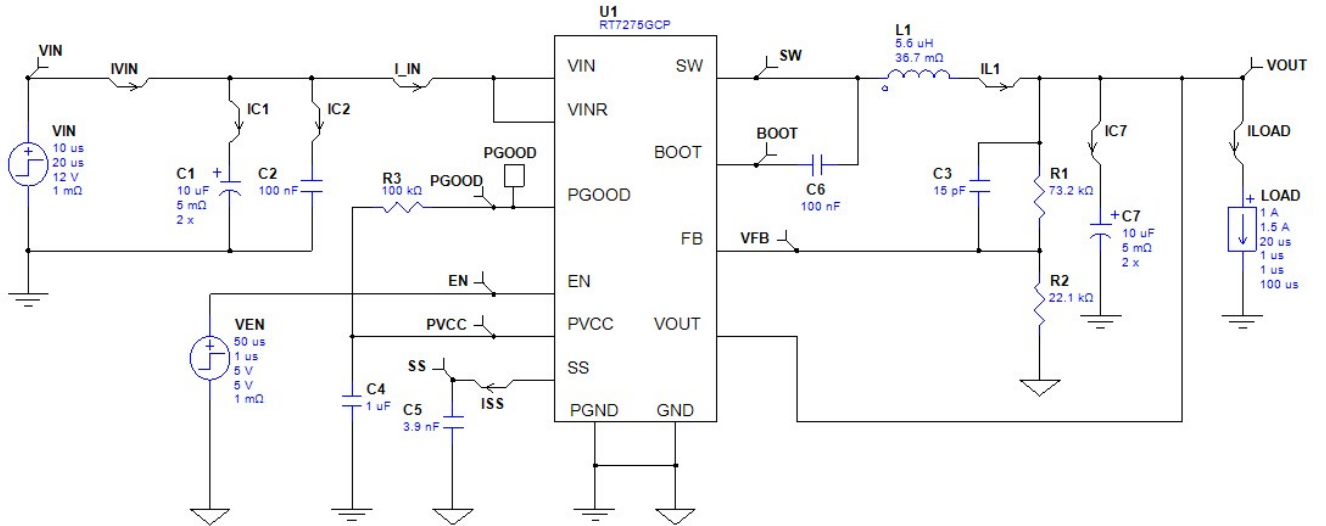
Vin Min	9.6	V
Vin Max	14.4	V
Vout	3.3	V
Iout	2	A

## RT7275GCP

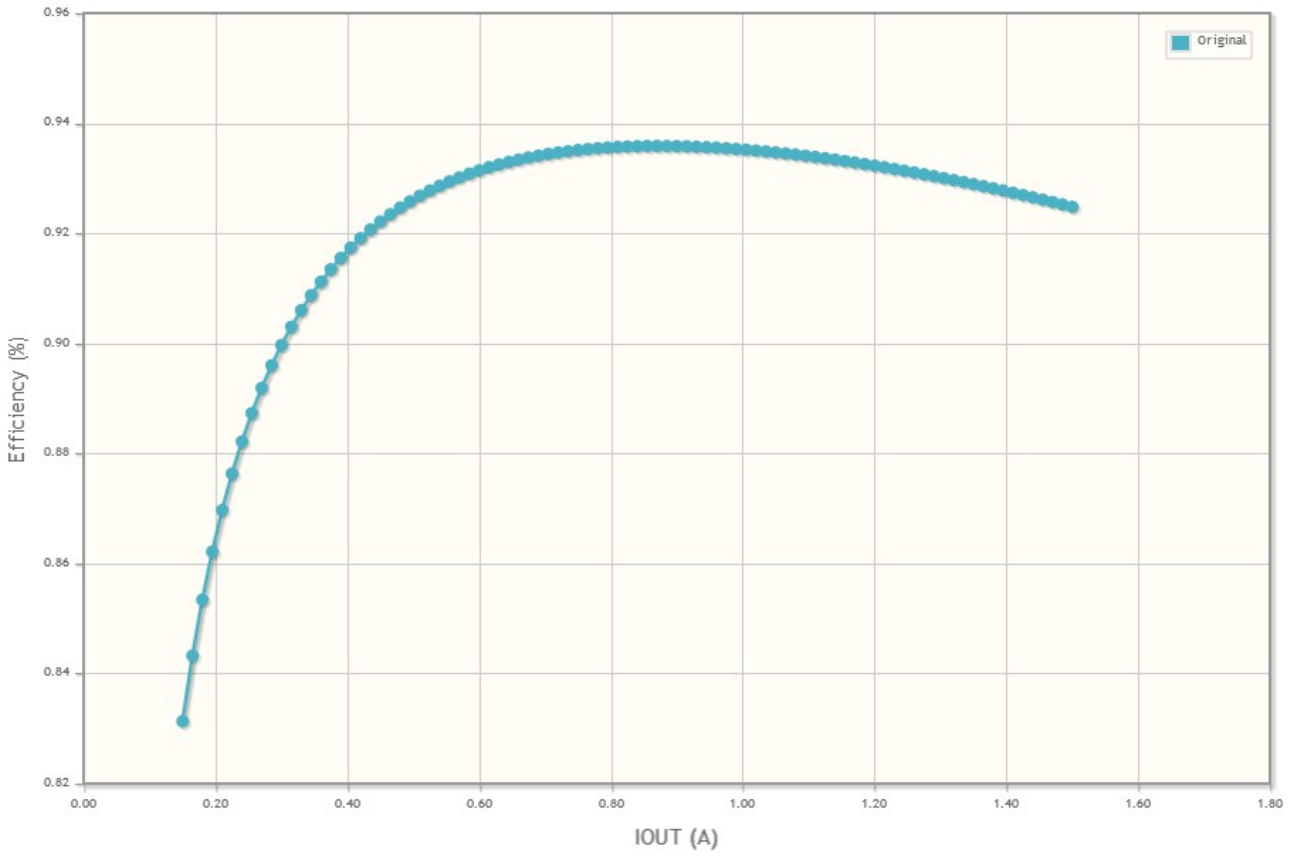


Ref	Qty	Part Number	Manufacturer	Description
U1	1	<a href="#">RT7275GCP</a>	Richtek	
C1	2	<a href="#">12103C106KAT2A</a>	AVX	Capacitor 10uF, 14.4V, 20, 5mΩCap Ceramic 10uF 25V X7R 10% SMD 1210 125C Embossed T/R
C2	1	<a href="#">0402YC104KAT2A</a>	AVX	Capacitor 100nF, 14.4V, 20Cap Ceramic 0.1uF 16V X7R 10% SMD 0402 125C Paper T/R
C3	1	<a href="#">02013A150GAT2A</a>	AVX	Capacitor 15pF, 3.3V, 20Cap Ceramic 15pF 25V C0G 2% SMD 0201 125C Paper T/R
C4	1	<a href="#">0603YC105KAT2A</a>	AVX	Capacitor 1uF, 10V, 20Cap Ceramic 1uF 16V X7R 10% SMD 0603 125C Paper T/R
C5	1	<a href="#">06033C392JAT2A</a>	AVX	Capacitor 3.9nF, 10V, 20Cap Ceramic 0.0039uF 25V X7R 5% SMD 0603 125C Paper T/R
C6	1	<a href="#">0402YC104KAT2A</a>	AVX	Capacitor 100nF, 10V, 20Cap Ceramic 0.1uF 16V X7R 10% SMD 0402 125C Paper T/R
C7	2	<a href="#">08056C106KAT2A</a>	AVX	Capacitor 10uF, 3.3V, 20, 5mΩCap Ceramic 10uF 6.3V X7R 10% SMD 0805 125C Embossed T/R
L1	1	<a href="#">2256-10L</a>	API Delevan	Inductor 5.6uH, 36.7mΩPOWER CHOKE 5.6UH MOLDED AXIAL
R1	1	<a href="#">CR0805-FX-7322ELF</a>	Bourns	Resistor 73.2kΩ, 1Res Thick Film 0805 73.2K Ohm 1% 0.125W(1/8W) ±100ppm/°C Molded SMD Paper Tape on Plastic Reel
R2	1	<a href="#">CR0402-FX-2212GLF</a>	Bourns	Resistor 22.1kΩ, 1Res Thick Film 0402 22.1K Ohm 1% 0.063W(1/16W) ±100ppm/°C Molded SMD Paper Tape on Plastic Reel
R3	1	<a href="#">1622827-1</a>	TE Connectivity	Resistor 100kΩ, 1Res Thick Film 0603 100K Ohm 1% 0.1W(1/10W) ±100ppm/°C Molded SMD

RT7275GCP

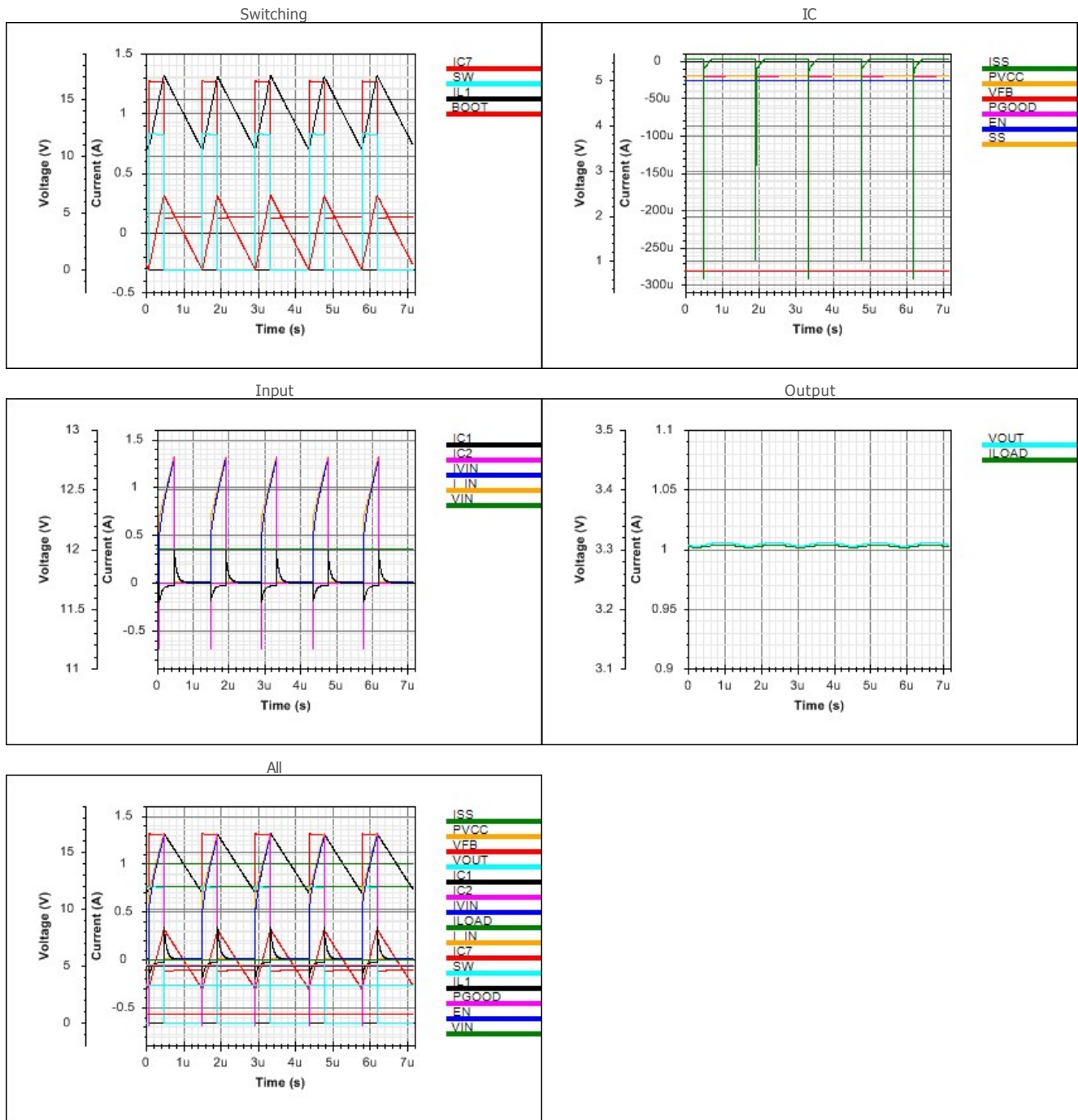


RT7275GCP

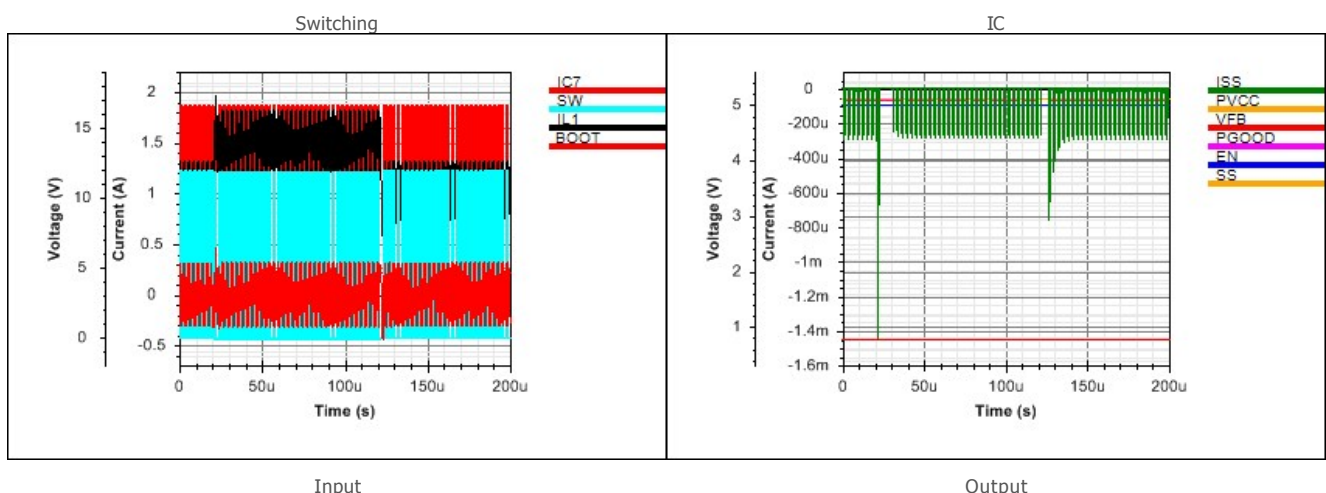


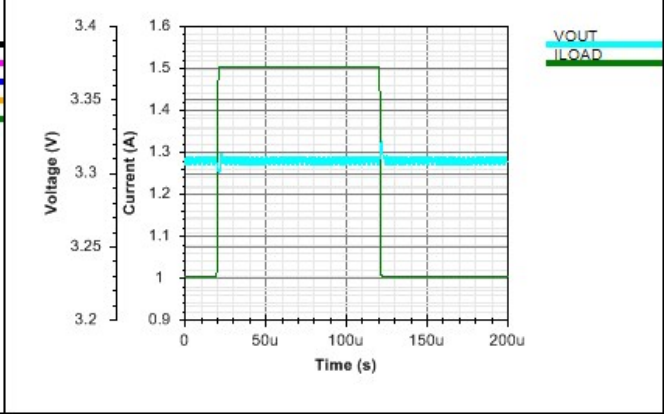
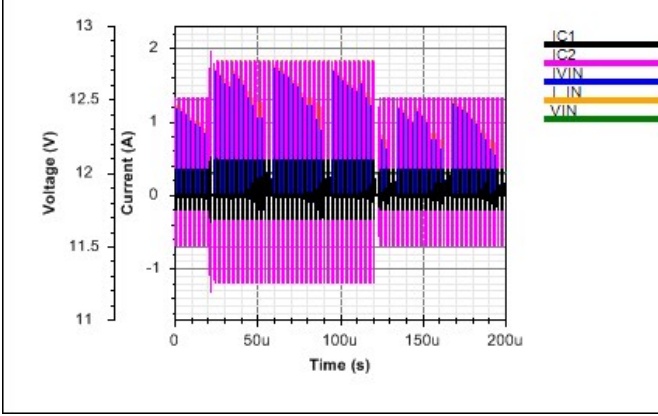
RT7275GCP

## Steady State



## Transient





All

